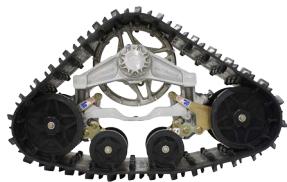


M3 SERIES



| SPECIFICATIONS | M3 | M3 UR | M3 UR HD | M3 PLUS/6x6 (REAR ONLY) |
|------------------------------|---|------------------------|-----------------------|---|
| TYPE OF VEHICLE | ATV | UTV | UTV | ATV / UTV |
| RECOMMENDED MAX GVW | 2,500 lbs | 3,500 lbs | 4,200 lbs | 2,500 / 3,500 / 4,200 lbs |
| FRAME CONSTRUCTION | Aluminum | | | |
| SPROCKET DRIVE UPGRADE | Yes | Yes | Yes | Yes |
| ASSEMBLY WEIGHT | 137 lbs | 143 lbs | 168 lbs | 162 / 168 / 198 lbs |
| SUSPENSION | Adjustable | | | |
| SUSPENSION LINKS | 2 | 4 | | 2 or 4 |
| SUSPENSION SPRINGS | Double | Triple | Quad | Double+, Triple+ or Quad+ |
| TRACK TREAD WIDTH | 13" | | | |
| TRACK TREAD STYLE | All-Terrain, Self-Cleaning | | | |
| RUBBER TRACK CONSTRUCTION | Rods, Std Ply, Std Cord | Rods, HD Ply, Std Cord | Rods, HD Ply, HD Cord | |
| RECOMMENDED OPERATING TEMP | (Ambient) -40° to +130° | | | |
| GROUND CONTACT LENGTH | (Hard Surface) 30" / (Soft Surface) 42" | | | (Hard Surface) 43" / (Soft Surface) 53" |
| GROUND CONTACT SURFACE AREA | 390 sq in min / 546 sq in max | | | 559 sq in min / 689 sq in max |
| SPROCKET DIAMETER (STANDARD) | 14" | | | |
| ROAD WHEEL COUNT | 8, 2 rows | | | 10, 2 rows |
| WHEEL MATERIAL | UMHW / Rubber | | | |
| PAINT COLOR | Natural Aluminum | | | |

* ALL SPECS ARE PER CORNER

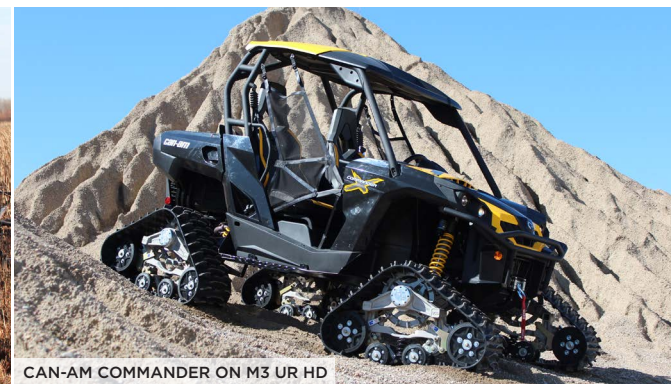
MODELS IN SERIES: M3, M3 UR, M3 UR HD - Plus and 6x6 available on each



POLARIS SPORTSMAN ON M3



ARCTIC CAT HDX 700 ON M3 UR



CAN-AM COMMANDER ON M3 UR HD